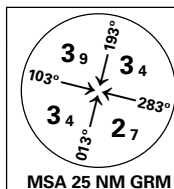


INSTRUMENT APPROACH CHART - ICAO PLAN VIEW SCALE: 1:350 000

OSLO

GARDERMOEN
ILS or LOC RWY 19LTRANSITION ALTITUDE
7000

ATIS: 126.125

AD ELEV: 681

APP: 118.475 120.450

THR ELEV: 681

DIST IN NM

DIR: 136.400 (119.975)

HGT RELATED TO THR RWY 19L ELEV, ALT AND HGT IN FT

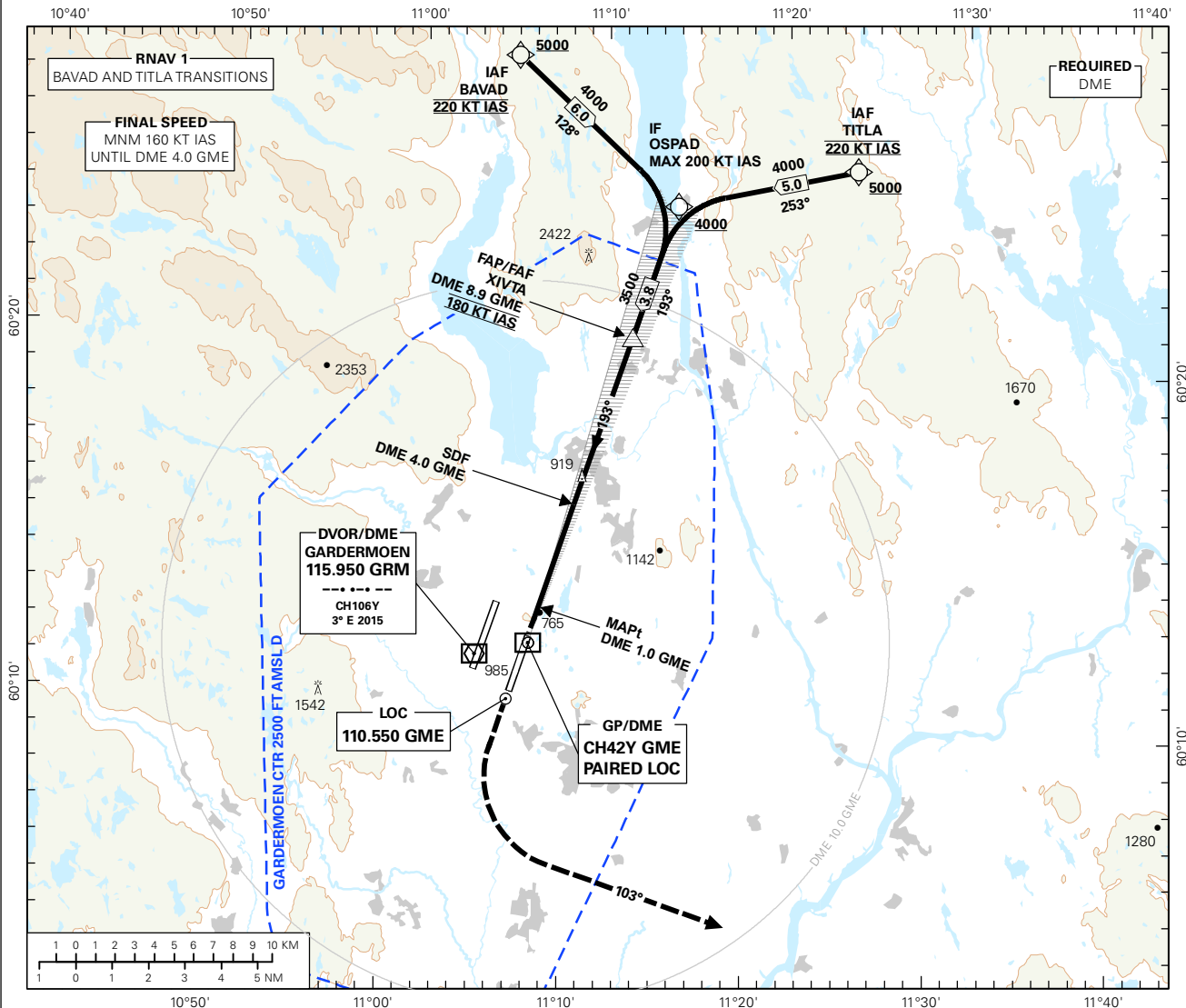
FIN: 128.900

CIRCLING HGT RELATED TO AD ELEV

TWR: 120.100 (123.325)

BEARINGS ARE MAGNETIC - VAR 2.8 ° E (2015)

GND: 121.900



DIST TO GME	8	7	6	5	4	3	2	1
ALT (HGT)	3230 (2549)	2910 (2229)	2590 (1909)	2270 (1589)	1950 (1269)	1640 (959)	1320 (639)	1000 (319)

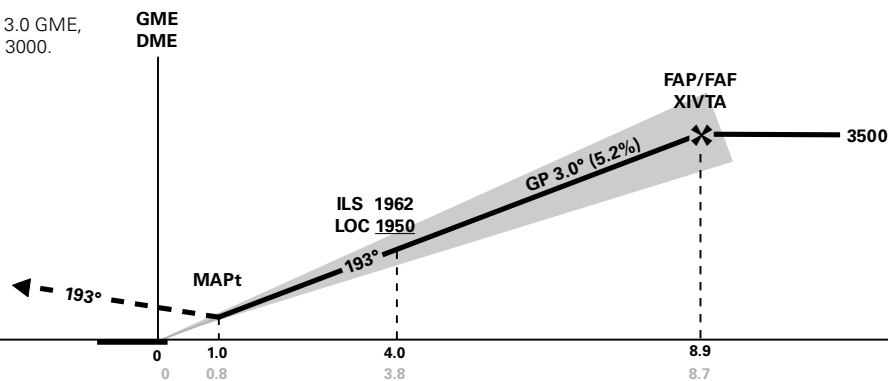
ILS RDH 50

MISSED APCH:

CLIMB ON RWY TRACK 193°. AT DME 3.0 GME, TURN LEFT TO TRACK 103°, CLIMB TO 3000. AT DME 13.0 GME, CLIMB TO 5000. EXPECT VECTORING BY OSLO APP.

RCF:

CONTINUE ON TRACK 103° TO 5000. AT DME 20.0 GME, TURN LEFT DCT GRM FOR NEW INSTRUMENT APCH.



CAT OF ACFT		A	B	C	D	FINAL APCH	DIST FAF - MAPt: 7.9					
OCA(H) STRAIGHT - IN	CAT I	820 (139)	828 (147)	838 (157)	849 (168)							
	LOC	1030 (349)				SPEED	KT	70	90	120	150	180
		-	-	-	-	TIME	MIN:SEC	06:45	05:15	03:57	03:09	02:38
	CIRCLING	1280 (599)		1570 (889)	1630 (949)	ROD	FT/MIN	370	480	635	795	965

NOTE: CIRCLING E OF RWY ONLY.

CHANGES: SPEED RESTRICTIONS.

Avinor

17 SEP 2015

THIS PAGE INTENTIONALLY LEFT BLANK